

Option 1



PROPOSED SUBDIVISION KAJIADO/NTASHART/18742
AND A PORTION OF KAJIADO/NTASHART/18151
IN TO SEVENTY EIGHT PORTIONS OF AREAS;

1 – 31	0.045 Ha
32	0.090 Ha (PUBLIC UTILITY)
33–78	0.045 Ha
ROAD	0.550 Ha

NOTE: Areas and distances are approximate and subject to ground survey

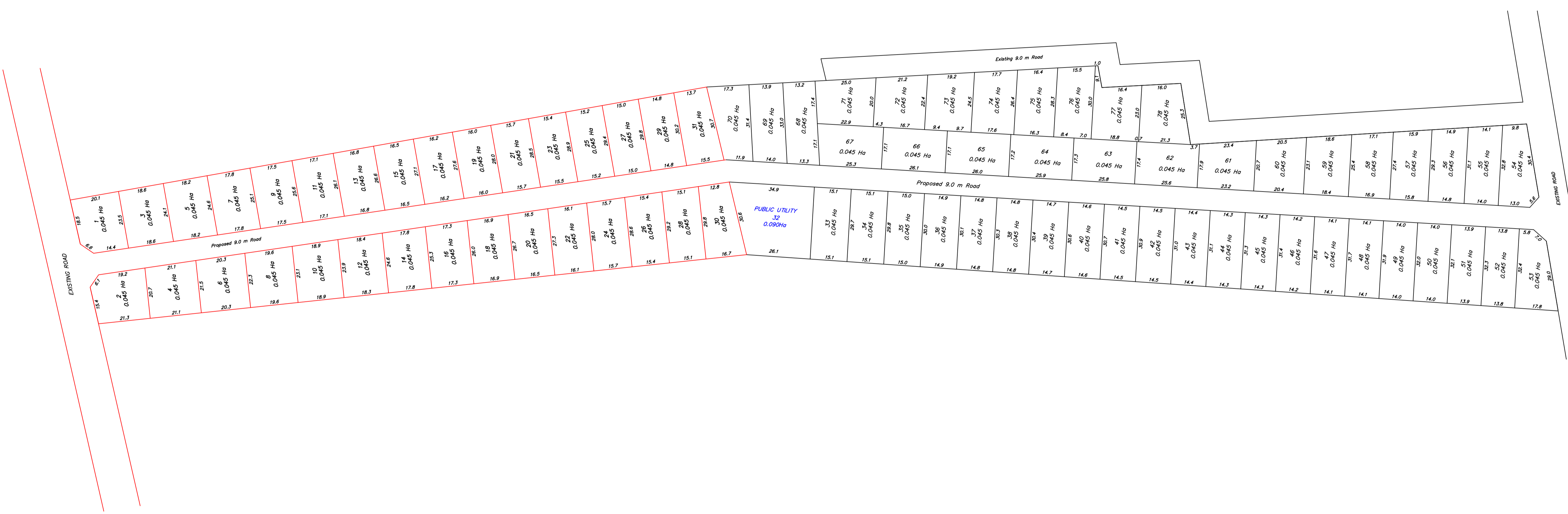
OWNER Kimititu Investment Company PLC
Woodlands Court, Woodlands Road
PO Box 37159, 00200, Nairobi, Kenya

OWNERS SIGN.....

SURVEYED BY

Engineering, Topographical, Cadastral Mutation Surveys,
Route Surveys and GIS Analysts.
Betty Plaza 3rd floor, room 311 Kitengela.

LOCATION MAP
(NOT TO SCALE)



Scale (A1) 1:1000